

## DEMOGRAPHICS 2005

POPULATION			
	1 Mile	3 Miles	5 Miles
Total Population	1,955	13,406	40,052
Total Households	724	4,722	13,214
Female Population	999	6,796	18,988
% Female	51.1%	50.7%	47.4%
Male Population	956	6,610	21,063
% Male	48.9%	49.3%	52.6%
Population Density (per sq. mi.)	622.2	474.2	509.9
Age			
0-4	6.5%	5.7%	6.7%
5-14	13.1%	14.7%	14.1%
15-19	8.2%	8.3%	7.2%
20-24	9.1%	6.1%	6.3%
25-34	14.0%	10.6%	13.4%
35-44	14.8%	15.9%	17.1%
45-54	16.1%	17.9%	17.5%
55-64	10.4%	11.9%	11.0%
65-74	4.9%	5.4%	4.3%
75-84	2.5%	2.5%	1.9%
85+	0.6%	1.0%	0.6%
Median	34.4	38.5	36.6
HOUSING UNITS			
Total	769	5,042	14,155
Owner Occupied	69.7%	79.8%	78.2%
Renter Occupied	24.4%	13.9%	15.1%
Vacant	5.9%	6.4%	6.7%
RACE AND ETHNICITY			
American Indian, Eskimo, Aleut	0.5%	0.3%	0.2%
Asian or Pacific Islander	0.7%	0.5%	1.3%
Black	1.6%	1.8%	8.5%
Hawaiian Islander	0.0%	0.0%	0.0%
White	95.0%	96.1%	88.3%
Other	1.4%	0.5%	0.6%
Multi-Race	0.8%	0.9%	1.1%
Hispanic Ethnicity	3.1%	1.9%	2.5%
Not of Hispanic Ethnicity	96.9%	98.1%	97.5%



## DEMOGRAPHICS 2005

<b>MARITAL STATUS</b>			
	1 Mile	3 Miles	5 Miles
Age 15+ Population	1,573	10,676	31,750
Divorced	11.3%	8.8%	8.1%
Never Married	23.2%	18.9%	18.5%
Now Married	57.5%	65.6%	60.5
Separated	3.0%	2.4%	9.5%
Widowed	5.0%	4.4%	3.4%
<b>EDUCATIONAL ATTAINMENT</b>			
Total Population Age 25+	1,236	8,739	26,364
Grade K-8	3.0%	3.0%	2.5%
Grade 9-12	6.4%	5.5%	5.3%
High School Graduate	28.1%	26.1%	24.9%
Associate Degree	7.4%	7.4%	8.2%
Bachelor's Degree	20.3%	22.1%	23.1%
Graduate Degree	8.9%	12.3%	12.6%
Some College, No Degree	25.9%	23.5%	23.4%
<b>HOUSEHOLD INCOME</b>			
Average Household	\$82,451	\$91,268	\$91,484
Median Household	\$64,413	\$70,208	\$73,765
Per Capita	\$30,420	\$31,977	\$30,864
\$0-\$9,999	3.9%	4.1%	3.4%
\$10,000-\$14,999	2.6%	2.3%	1.9%
\$15,000-\$24,999	10.4%	6.2%	5.2%
\$25,000-\$34,999	9.6%	8.6%	7.1%
\$35,000-\$49,999	12.3%	13.1%	12.2%
\$50,000-\$74,999	20.3%	19.5%	21.3%
\$75,000-\$99,999	16.4%	16.6%	17.8%
\$100,000-\$124,999	11.4%	11.5%	11.9%
\$125,000-\$149,999	5.3%	6.7%	6.8%
\$150,000+	8.0%	11.5%	12.4%
<b>VEHICLES AVAILABLE</b>			
0 Vehicles	2.0%	1.5%	1.9%
1 Vehicle	22.9%	17.4%	19.3%
2+ Vehicles	75.1%	81.1%	78.8%
Average Vehicles Per HH	2.10	2.30	2.20
Total Vehicles	1,533	10,791	29,262
<b>BUSINESS AND EMPLOYMENT</b>			
Number of Employees	921	2,715	12,629
Number of Establishments	130	437	1,070



## DEMOGRAPHICS 2010

POPULATION			
	1 Mile	3 Miles	5 Miles
Total Population	2,225	14,765	43,558
Total Households	823	5,200	14,348
Female Population	1,137	7,475	20,684
% Female	51.1%	50.6%	47.5%
Male Population	1,089	7,290	22,874
% Male	48.9%	49.4%	52.5%
Age			
0-4	6.2%	5.5%	6.5%
5-14	11.0%	12.2%	12.6%
15-19	7.5%	7.9%	7.0%
20-24	9.6%	6.5%	6.6%
25-34	15.0%	11.4%	13.5%
35-44	11.4%	12.3%	14.1%
45-54	16.4%	18.2%	17.8%
55-64	12.6%	14.4%	13.3%
65-74	7.0%	7.7%	6.0%
75-84	2.8%	3.8%	2.2%
85+	0.6%	1.0%	0.6%
Median	35.7	41.0	38.0
HOUSING UNITS			
Total	876	5,557	15,372
Owner Occupied	68.8%	79.3%	77.6%
Renter Occupied	25.3%	14.3%	15.7%
Vacant	6.0%	6.5%	6.7%
RACE AND ETHNICITY			
American Indian, Eskimo, Aleut	0.6%	0.3%	0.3%
Asian or Pacific Islander	0.7%	0.5%	1.5%
Black	1.6%	1.9%	8.5%
Hawaiian Islander	0.0%	0.0%	0.0%
White	93.7%	96.0%	88.1%
Other	2.2%	0.6%	0.7%
Multi-Race	1.2%	0.7%	0.9%
Hispanic Ethnicity	4.0%	2.4%	3.1%
Not of Hispanic Ethnicity	96.0%	97.6%	96.9%



## DEMOGRAPHICS 2010

MARITAL STATUS			
	1 Mile	3 Miles	5 Miles
Age 15+ Population	1,844	12,159	35,260
Divorced	11.5%	9.3%	8.9%
Never Married	22.6%	19.1%	19.0%
Now Married	56.6%	63.4%	58.4%
Separated	4.8%	4.2%	10.3%
Widowed	4.5%	4.1%	3.5%
EDUCATIONAL ATTAINMENT			
Total Population Age 25+	1,469	9,989	29,393
Grade K-8	2.1%	2.0%	1.6%
Grade 9-12	4.8%	4.1%	3.8%
High School Graduate	27.9%	26.0%	25.0%
Associate Degree	8.0%	8.0%	9.0%
Bachelor's Degree	20.9%	22.6%	23.7%
Graduate Degree	9.5%	12.8%	13.1%
Some College, No Degree	26.8%	24.3%	23.8%
HOUSEHOLD INCOME			
Average Household	\$93,176	\$103,533	\$103,371
Median Household	\$72,470	\$80,268	\$84,364
Per Capita	\$34,369	\$36,254	\$34,782
\$0-\$9,999	3.8%	3.9%	3.2%
\$10,000-\$14,999	2.4%	2.0%	1.7%
\$15,000-\$24,999	8.4%	5.2%	4.5%
\$25,000-\$34,999	10.9%	8.3%	6.5%
\$35,000-\$49,999	7.7%	9.7%	9.7%
\$50,000-\$74,999	18.8%	18.1%	18.3%
\$75,000-\$99,999	15.5%	14.6%	16.3%
\$100,000-\$124,999	12.5%	13.1%	13.7%
\$125,000-\$149,999	8.8%	8.8%	8.9%
\$150,000+	11.4%	16.2%	17.3%
VEHICLES AVAILABLE			
Average Vehicles Per HH	2.50	2.60	2.50
Total Vehicles	1,835	12,448	33,447
0 Vehicles	1.6%	1.0%	1.6%
1 Vehicle	21.9%	16.3%	17.8%
2+ Vehicles	76.6%	82.7%	80.6%



# DEMOGRAPHICS 2000

POPULATION			
	1 Mile	3 Miles	5 Miles
Total Population	1,652	11,822	36,051
Total Households	607	4,138	11,847
Female Population	846	6,002	17,046
% Female	51.2%	50.8%	47.3%
Male Population	806	5,820	19,005
% Male	48.8%	49.2%	52.7%
<b>Age</b>			
0-4	8.2%	6.9%	7.3%
5-14	15.0%	17.0%	15.5%
15-19	7.4%	7.6%	6.7%
20-24	6.0%	4.0%	4.9%
25-34	15.2%	11.4%	14.5%
35-44	18.0%	19.4%	20.3%
45-54	15.4%	17.0%	16.5%
55-64	7.6%	8.8%	8.4%
65-74	4.3%	4.5%	3.8%
75-84	2.3%	2.5%	1.8%
85+	0.6%	1.0%	0.6%
Median	34.0	36.8	35.7
HOUSING UNITS			
Total	626	4,293	12,343
Owner Occupied	72.7%	82.5%	81.0%
Renter Occupied	24.2%	13.9%	15.0%
Vacant	3.0%	3.6%	4.0%
RACE AND ETHNICITY			
American Indian, Eskimo, Aleut	0.3%	0.2%	0.1%
Asian or Pacific Islander	0.7%	0.5%	1.1%
Black	1.5%	1.7%	8.5%
White	95.3%	96.3%	88.5%
Other	1.4%	0.5%	0.6%
Multi-Race	0.8%	0.8%	1.2%
Hispanic Ethnicity	2.1%	1.3%	1.8%
Not of Hispanic Ethnicity	97.9%	98.7%	98.2%



# DEMOGRAPHICS 2000

MARITAL STATUS			
	1 Mile	3 Miles	5 Miles
Age 15+ Population	1,268	8,997	27,845
Divorced	11.3%	8.5%	7.8%
Never Married	23.5%	18.8%	18.2%
Now Married	57.4%	66.2%	60.8%
Separated	2.6%	1.9%	9.8%
Widowed	5.1%	4.5%	3.4%
EDUCATIONAL ATTAINMENT			
Total Population Age 25+	1,047	7,629	23,698
Grade K-8	4.2%	3.9%	3.4%
Grade 9-12	8.5%	7.3%	7.7%
High School Graduate	27.8%	26.0%	24.4%
Associate Degree	6.6%	6.7%	7.0%
Bachelor's Degree	19.6%	21.5%	22.3%
Graduate Degree	8.3%	11.6%	11.9%
Some College, No Degree	24.8%	22.7%	22.9%
No School Completed	0.3%	0.3%	0.4%
Public School Enrollment	83.8%	78.4%	75.1%
Private School Enrollment	16.2%	21.6%	24.9%
HOUSEHOLD INCOME			
Average Household	\$67,894	\$78,047	\$82,330
Median Household	\$58,900	\$63,303	\$66,564
Per Capita	\$24,946	\$27,319	\$27,055
\$0-\$9,999	3.8%	4.1%	3.5%
\$10,000-\$14,999	2.8%	2.5%	2.2%
\$15,000-\$24,999	11.9%	7.1%	5.7%
\$25,000-\$34,999	9.0%	9.7%	8.5%
\$35,000-\$49,999	13.4%	14.3%	13.6%
\$50,000-\$74,999	24.0%	22.0%	24.3%
\$75,000-\$99,999	15.7%	16.4%	17.1%
\$100,000-\$124,999	9.8%	9.7%	9.9%
\$125,000-\$149,999	3.3%	5.5%	5.7%
\$150,000-\$199,999	4.6%	4.7%	4.7%
\$200,000+	1.7%	4.0%	4.7%



## DEMOGRAPHICS 2000

<b>VEHICLES AVAILABLE</b>			
Average Vehicles Per HH	2.50	2.60	2.50
Total Vehicles	1,835	12,448	33,447
0 Vehicles	1.6%	1.0%	1.6%
1 Vehicle	21.9%	16.3%	17.8%
2+ Vehicles	76.6%	82.7%	80.6%
<b>BUSINESS</b>			
Blue Collar Occupations	363	2,060	5,699
White Collar Occupations	551	4,042	12,426
% Blue Collar Workers	39.7%	33.8%	31.4%
% White Collar Workers	60.3%	66.2%	68.6%



# DEMOGRAPHICS 1990

POPULATION			
	1 Mile	3 Miles	5 Miles
Total Population	1,232	8,952	23,732
Total Households	445	3,035	7,606
Female Population	632	4,560	11,477
% Female	51.3%	50.9%	48.4%
Male Population	601	4,392	12,255
% Male	48.7%	49.1%	51.6%
Age			
0-4	6.0%	6.2%	6.3%
5-14	18.8%	18.6%	17.2%
15-19	7.7%	8.1%	7.7%
20-24	7.3%	5.5%	6.0%
25-34	14.3%	14.7%	17.6%
35-44	19.8%	19.9%	21.1%
45-54	11.2%	12.3%	12.3%
55-64	7.1%	6.9%	6.2%
65-74	4.8%	4.4%	3.5%
75-84	2.0%	2.5%	1.6%
85+	0.9%	0.9%	0.5%
Median	32.7	33.4	32.6
HOUSING UNITS			
Total	478	3,156	7,948
Owner Occupied	61.2%	79.0%	74.1%
Renter Occupied	31.9%	17.1%	21.6%
Vacant	6.8%	3.9%	4.3%
RACE AND ETHNICITY			
American Indian, Eskimo, Aleut	0.3%	0.3%	0.2%
Asian or Pacific Islander	0.4%	0.3%	0.5%
Black	1.7%	2.8%	8.7%
White	97.3%	96.5%	90.3%
Other	0.2%	0.2%	0.2%
Hispanic Ethnicity	0.7%	0.7%	0.8%
Not of Hispanic Ethnicity	96.0%	97.6%	96.9%





# DEMOGRAPHICS 1990

EDUCATIONAL ATTAINMENT			
	1 Mile	3 Miles	5 Miles
Total Population Age 25+	741	5,521	14,911
Grade K-8	11.0%	7.5%	6.3%
Grade 9-12	10.7%	7.5%	10.9%
High School Graduate	32.4%	32.4%	29.5%
Associate Degree	6.1%	6.1%	6.6%
Bachelor's Degree	11.9%	15.4%	15.9%
Graduate Degree	4.7%	7.0%	7.9%
Some College, No Degree	23.1%	20.5%	22.9%
HOUSEHOLD INCOME			
Average Household	\$35,788	\$44,660	\$47,340
Median Household	\$32,146	\$36,191	\$38,158
Per Capita	\$12,887	\$15,074	\$15,557
\$0-\$9,999	11.0%	9.1%	7.6%
\$10,000-\$14,999	19.1%	14.1%	12.6%
\$15,000-\$24,999	16.8%	16.5%	16.3%
\$25,000-\$34,999	21.6%	17.2%	16.3%
\$35,000-\$49,999	9.1%	11.4%	12.8%
\$50,000-\$74,999	10.9%	9.2%	10.8%
\$75,000-\$99,999	7.2%	10.0%	9.4%
\$100,000-\$124,999	2.7%	6.5%	8.0%
\$125,000-\$149,999	2.4%	3.3%	2.9%
\$150,000+	0.3%	1.9%	2.4%
VEHICLES AVAILABLE			
Average Vehicles Per HH	1.90	2.10	2.10
Total Vehicles Available	863	6,518	16,152
0 Vehicles	1.5%	2.5%	2.3%
1 Vehicle	35.0%	21.9%	21.9%
2+ Vehicles	63.5%	75.6%	75.8%



# DEMOGRAPHIC TRENDS

POPULATION TREND			
	1 Mile	3 Miles	5 Miles
1990	1,232	8,953	23,732
2000	1,652	11,822	36,051
Change from 1990–2000	34.1%	32.1%	51.9%
2005	1,955	13,406	40,052
Change from 2000–2005	18.3%	13.4%	11.1%
2010	2,225	14,765	43,558
Change from 2005–2010	13.8%	10.1%	8.8%

HOUSEHOLD TREND			
	1 Mile	3 Miles	5 Miles
1990	445	3,035	7,606
2000	607	4,138	11,847
Change from 1990–2000	36.3%	36.4%	55.8%
2005	724	4,722	13,214
Change from 2000–2005	19.3%	14.1%	11.5%
2010	823	6,200	14,348
Change from 2005–2010	13.8%	10.1%	8.6%

AVERAGE HOUSEHOLD SIZE TREND			
	1 Mile	3 Miles	5 Miles
1990	2.77	2.92	2.94
2000	2.72	2.83	2.84
2005	2.70	2.82	2.85
2010	2.70	2.82	2.87

MEDIAN AGE TREND			
	1 Mile	3 Miles	5 Miles
1990	33	33	33
2000	34	37	36
Change from 1990–2000	3.8%	10.3%	9.2%
2005	34	37	36
2010	36	41	38
Change from 2005–2010	3.6%	6.7%	3.8%

RACE AND ETHNICITY TREND			
American Indian, Eskimo, Aleut			
Change 1990–2000	26.6%	-8.5%	10.7%
Change from 2005–2010	46.7%	49.3%	47.8%
Asian or Pacific Islander			
Change from 1990–2000	119.0%	91.4%	210.4%
Change from 2005–2010	8.0%	8.8%	27.9%
Black			
Change from 1990–2000	18.3%	-18.8%	47.1%
Change from 2005–2010	16.8%	17.6%	9.2%
White			
Change 1990–2000	31.3%	31.8%	48.8%
Change from 2005–2010	12.2%	9.9%	8.5%
Other			
Change from 1990–2000	659.7%	255.0%	395.4%
Change from 2005–2010	81.4%	34.1%	24.5%
Hispanic Ethnicity			
Change 1990–2000	305.2%	146.3%	231.5%
Change from 2005–2010	44.1%	37.9%	34.3%
Not of Hispanic Ethnicity			
Change from 1990–2000	32.1%	31.3%	50.4%
Change from 2005–2010	12.9%	9.6%	8.1%

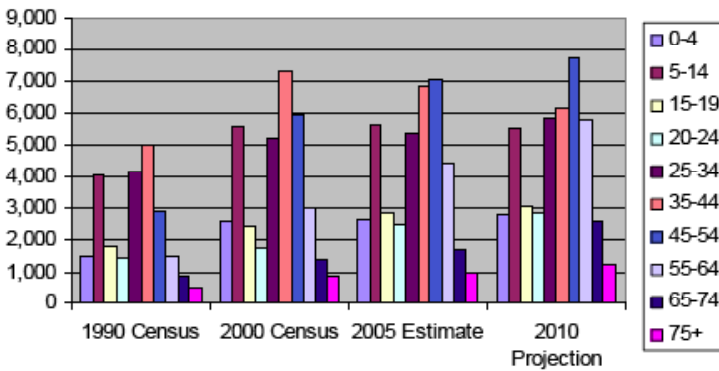
  

HOUSING UNITS TRENDS			
Total Housing Units			
Change 1990–2000	31.0%	36.0%	55.3%
Change from 2005–2010	13.9%	10.2%	8.6%
Owner Occupied Housing Units			
Change from 1990–2000	55.6%	42.0%	69.7%
Change from 2005–2010	12.4%	9.5%	7.8%
Renter Occupied Housing Units			
Change from 1990–2000	-0.6%	10.5%	7.9%
Change from 2005–2010	17.8%	13.7%	12.9%
Vacant Housing Units			
Change from 1990–2000	-41.7%	27.6%	44.8%
Change from 2005–2010	15.9%	11.5%	8.8%

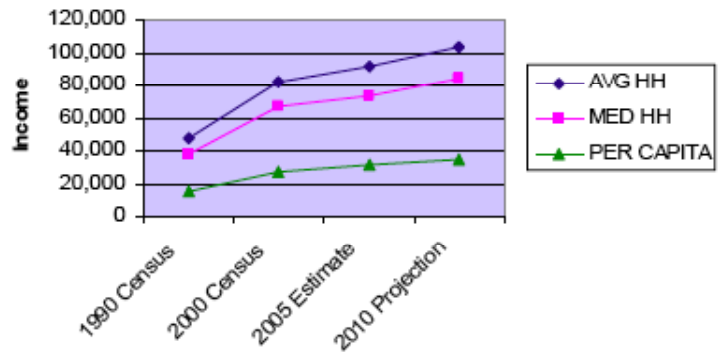


# DEMOGRAPHIC TRENDS

Population by Age



Households by Income Trend



Age Group	1990 Census	2000 Census	2005 Estimate	2010 Projection
0-4	1,495	2,622	2,661	2,810
5-14	4,077	5,585	5,639	5,485
15-19	1,826	2,400	2,862	3,048
20-24	1,421	1,747	2,524	2,864
25-34	4,168	5,215	5,360	5,875
35-44	5,016	7,319	6,856	6,136
45-54	2,924	5,951	7,009	7,734
55-64	1,465	3,019	4,423	5,788
65-74	830	1,355	1,726	2,602
75+	509	838	990	1,213

HH Income	1990 Census	2000 Census	2005 Estimate	2010 Projection
Avg. HH	\$47,340	\$82,330	\$91,484	\$103,371
Med. HH	\$38,158	\$66,564	\$73,765	\$84,364
Per Cap.	\$15,557	\$27,055	\$30,864	\$34,782

In 1990, the median age of the total population in the study area was 32.6, and in 2000, it was 35.7. The median age in 2005 is 36.6 and it is predicted to change in five years to 38.0 years.

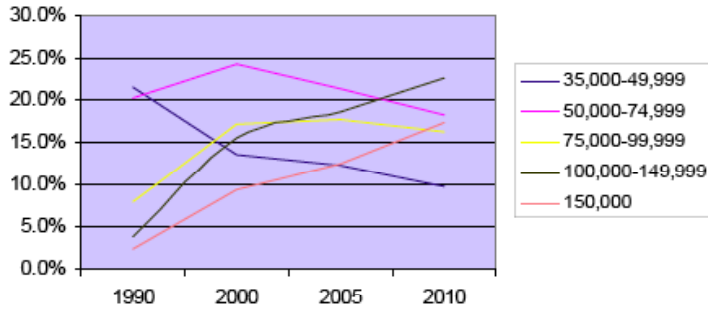
In 2005, females presented 47.4% of the population with a median age of 37.0 and males represented 52.6% of the population with a median age of 36.2 years.

In 2005, the most prominent age group in this geography is 45 to 54 years. The age group least represented in this geography is 75+ years.

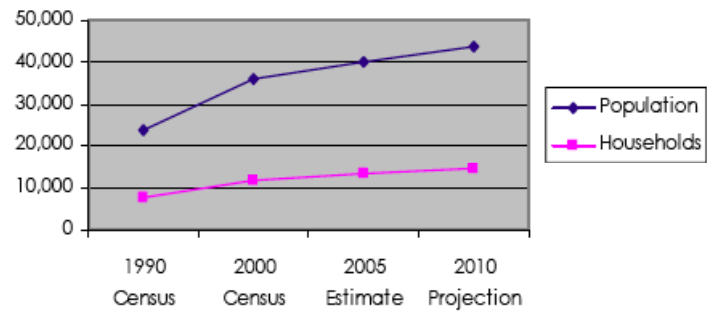


# DEMOGRAPHIC TRENDS

Household Income Trends



Population Demographic Trend



HH Income	1990 Census	2000 Census	2005 Estimate	2010 Projection
\$35,000-\$49,999	21.5%	13.6%	12.2%	9.7%
\$50,000-\$74,999	20.3%	24.3%	21.3%	18.3%
\$75,000-\$99,999	8.0%	17.1%	17.8%	16.3%
\$100,000-\$149,999	3.8%	15.6%	18.7%	22.6%
\$150,000+	2.4%	9.4%	12.4%	17.3%

	1990 Census	2000 Census	2005 Estimate	2010 Projection
Population	23,732	36,051	40,052	43,558
Households	7,606	11,847	13,214	14,348

The number of households in the study area in 1990 was 7,606 and changed to 11,847 in 2000, representing a 56% increase. The household count in 2005 was 13,214 and the household projection for 2010 is 14,348, a 9% increase. The population in the study area in 1990 was 23,732 and in 2000 it was 36,051, roughly a 52% increase. The population in 2005 was 40,052 and the projection for 2010 is 43,558 representing a change of 9%.

